

Please rate this document after reviewing at the bottom of this page.

TIRE WEAR

⚠ CAUTION

- Using tires and wheels other than the recommended sizes can cause unusual handling characteristics and poor vehicle control, resulting in a serious accident.

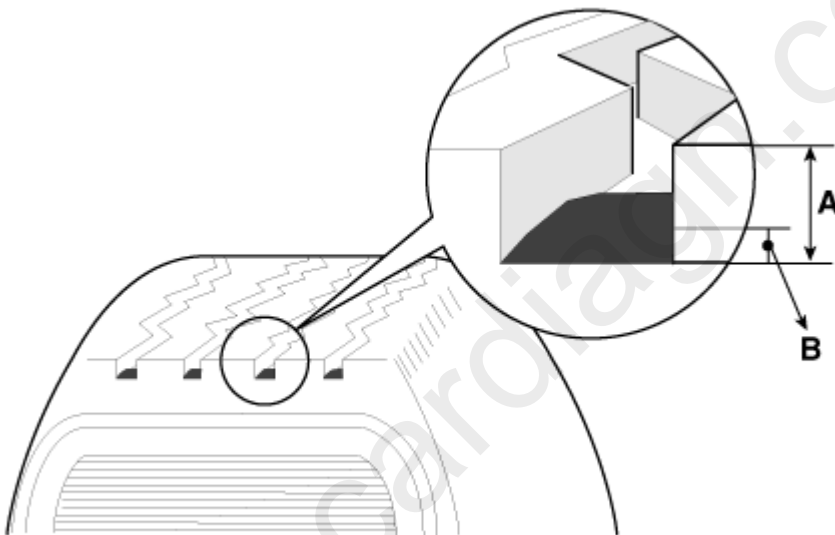
- Measure the tread depth of the tires.

Tread depth [limit] : 1.6 mm (0.0630 in.)

- If the remaining tread depth (A) is less than the limit, replace the tire.

NOTICE

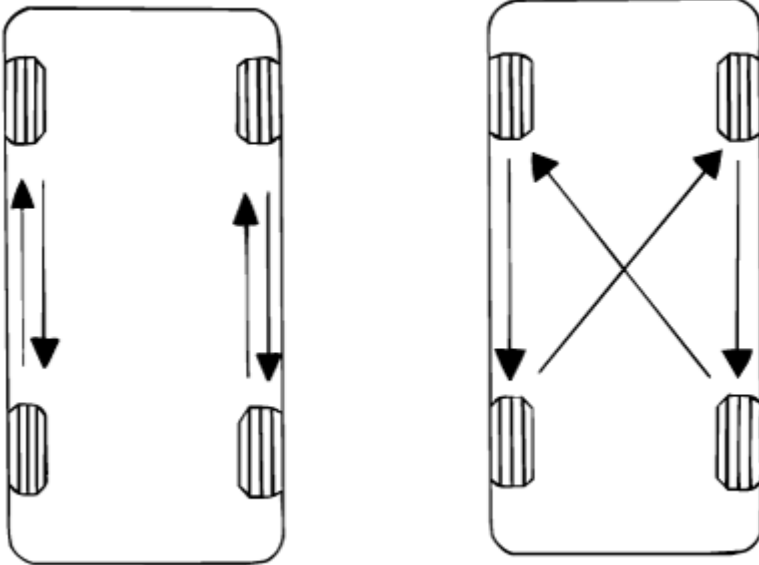
When the tread depth of the tires is less than 1.6 mm (0.0630 in.), the wear indicators (B) will appear.



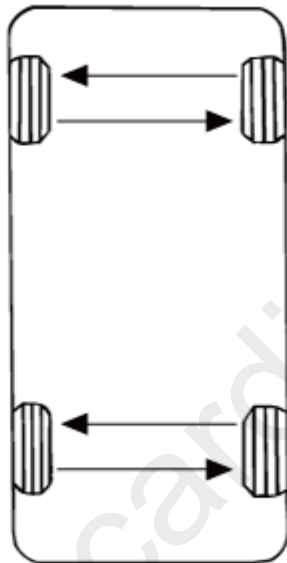
Tire Rotation

Rotate the tires in the pattern illustrated.

Tire rotation 17, 18 inch



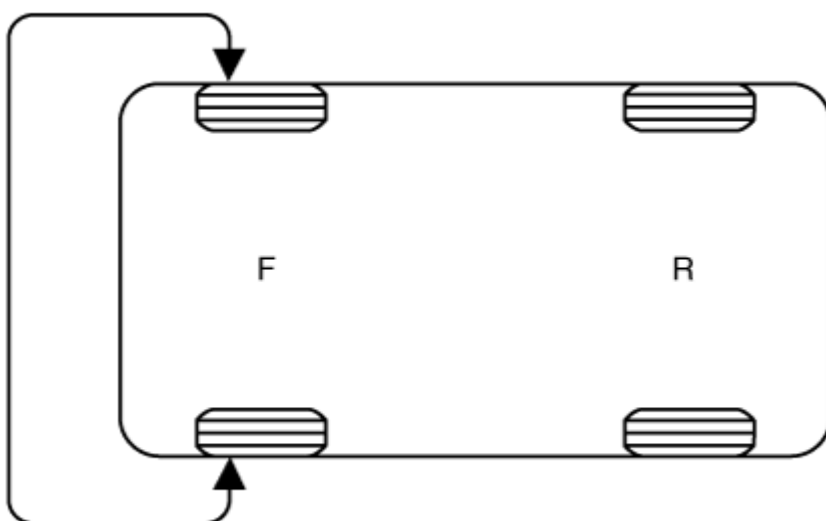
Tire rotation 19 inch



Checking For Pull And Wander

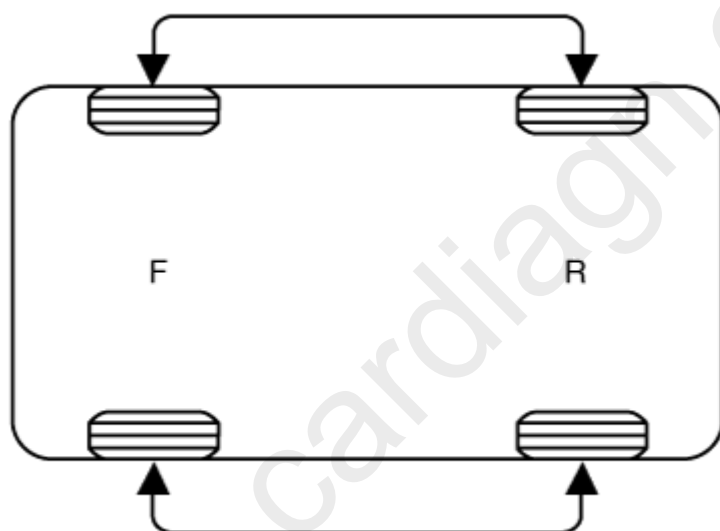
If the steering pulls to one side, rotate the tires according to the following wheel rotation procedure.

1. Rotate the front right and front left tires, and perform a road test in order to confirm vehicle stability.

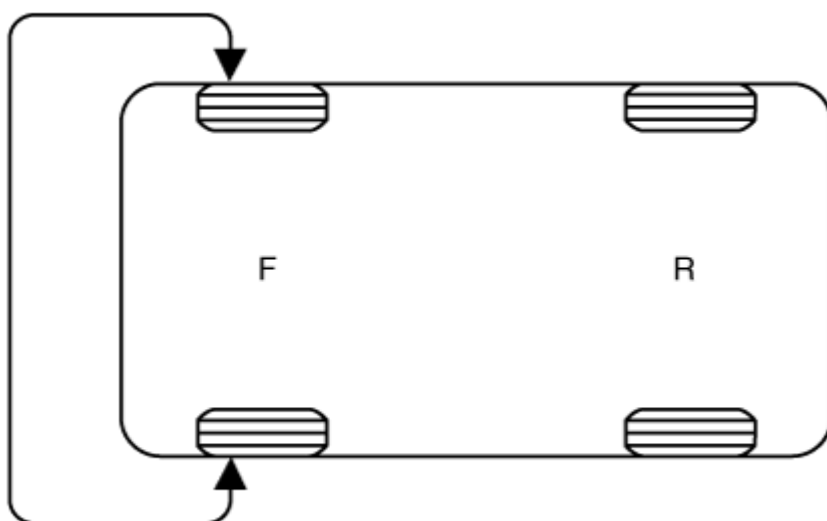


2. If the steering pulls to the opposite side, rotate the front and rear tires, and perform a road test again.

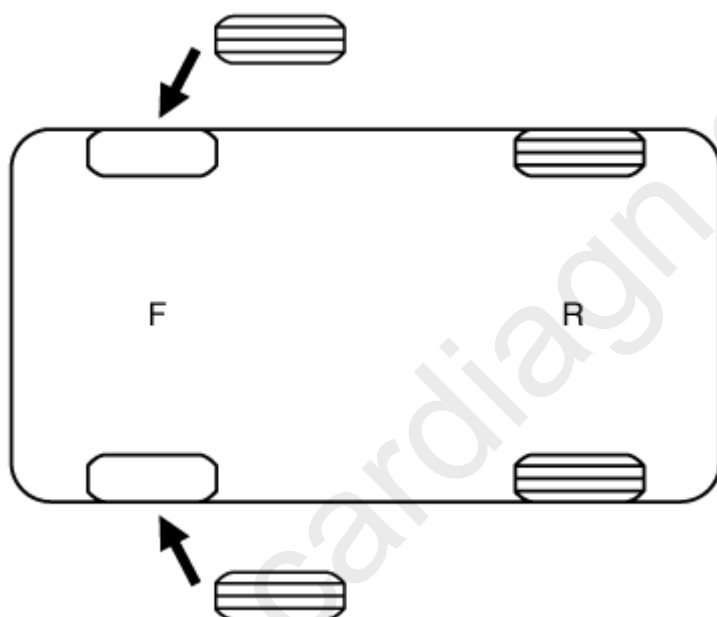
[17, 18 inch only]



3. If the steering continues to pull to one side, rotate the front right and left tires again, and perform a road test.

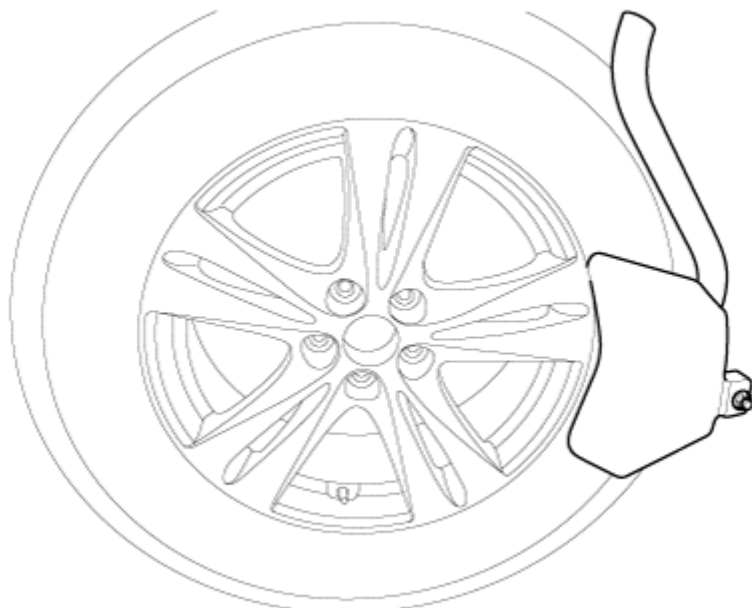


4. If the steering continues to pull to the opposite side, replace the front wheels with new ones.



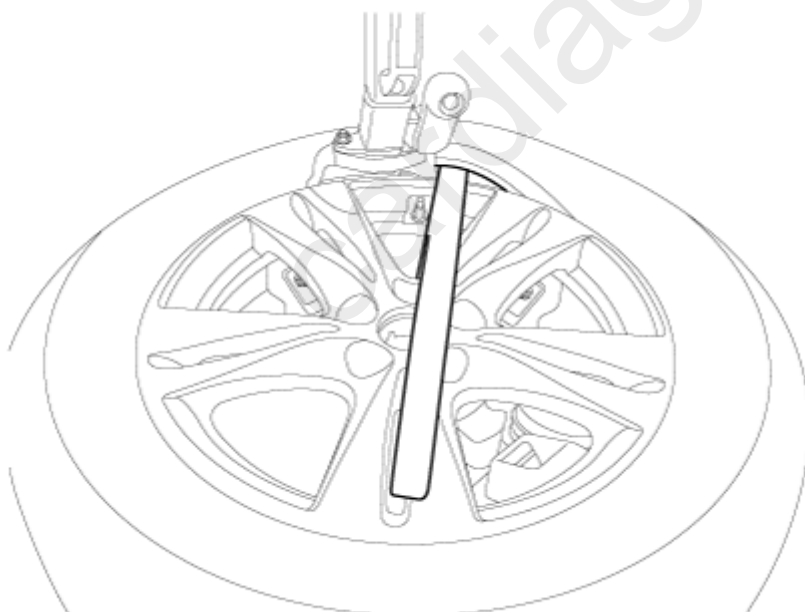
REMOVAL

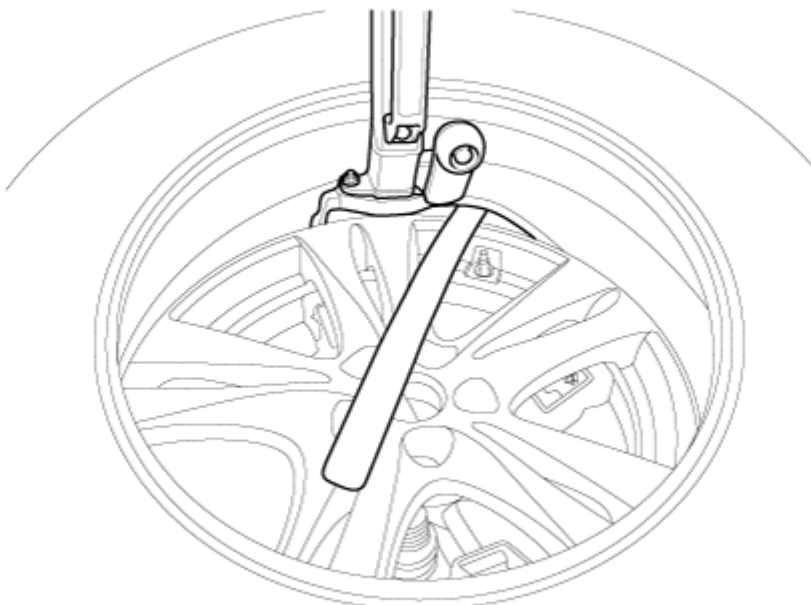
1. Remove valve core and deflate the tire.
2. Remove the side of the tire bead area from the wheel using tire changing machine.

**⚠ CAUTION**

- The tire bead should be broken approx. 90° from the valve side of the wheel. The bead breaker should not be set too deep.
- Avoid tire/tool contact with the valve on dismount.
- Dismount should end near the valve.

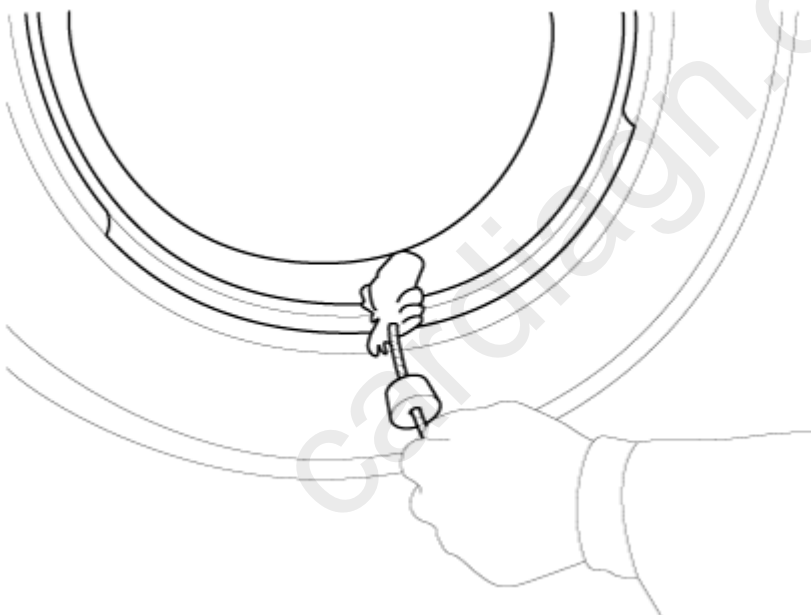
3. Rotate the wheel clockwise.



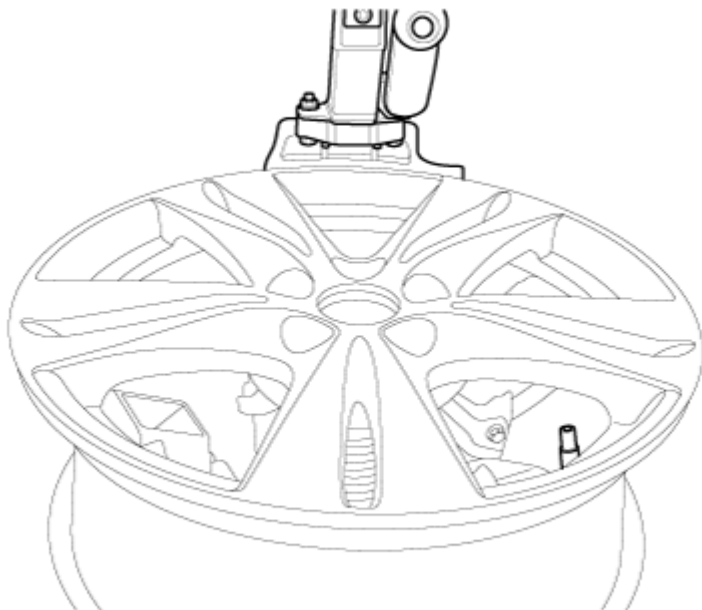


INSTALLATION

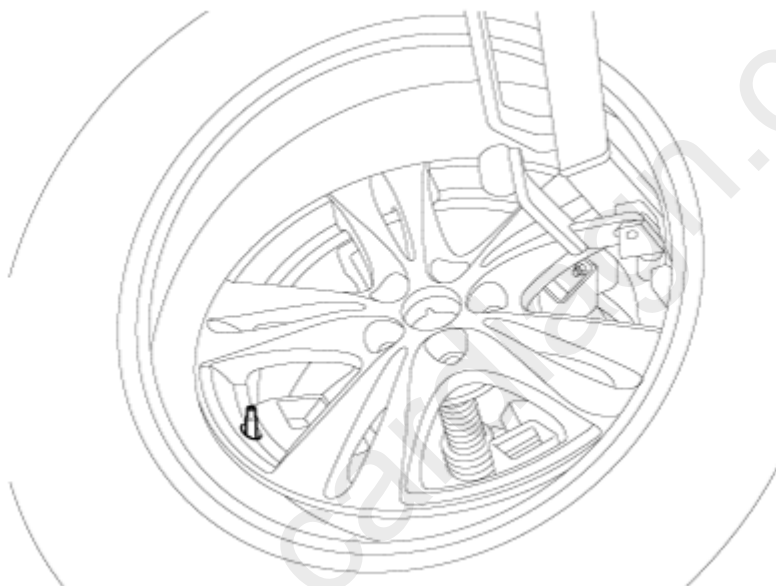
1. Apply tire soap or lubrication to the top and bottom tire beads.



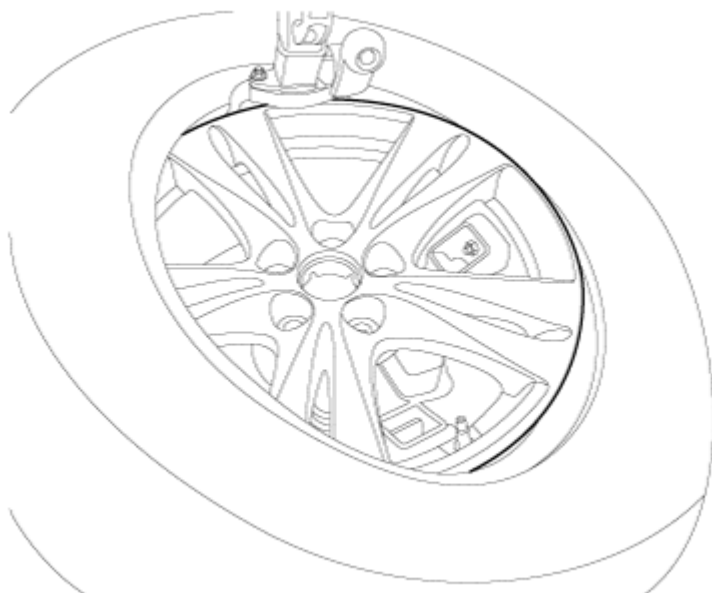
2. To fit the bottom bead, position the valve at the 5 o'clock position relative to the head on the tire changing machine.



3. Place the tire on the rim so the bottom bead touches the edge of the rim after the valve (6 o'clock). Rotate the rim clockwise, and push down on the tire at the 3 o'clock position to fit bottom bead.

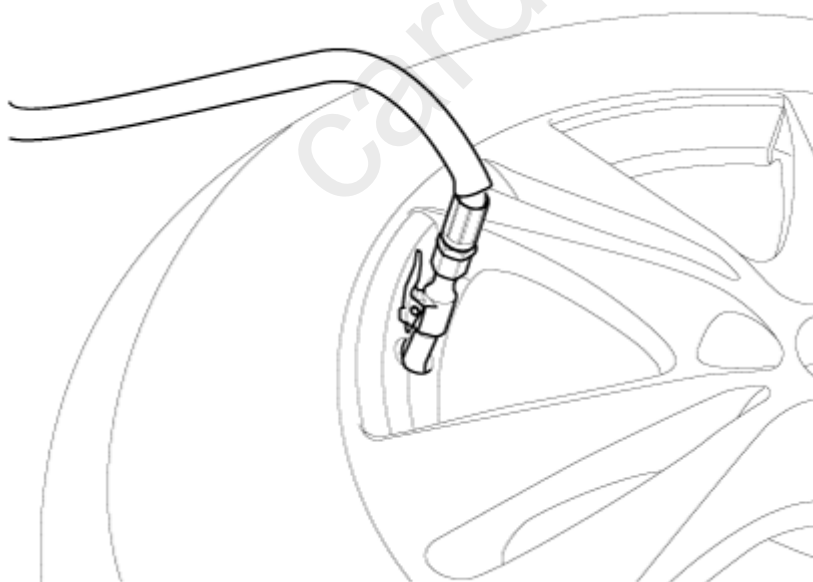


4. After bottom bead is on tire, rotate the rim until the valve is at the 5 o'clock position relative to the head on the tire changing machine. Push down on the tire at the 3 o'clock position and rotate the rim clockwise to fit the top bead.



5. Inflate the tire until both beads seat.

Item		Specification	
		Front	Rear
Tire pressure kPa (psi)	225/50 R17	250 (36)	
	225/45 R18	250 (36)	270 (39)
	225/40 ZR19	250 (36)	-
	255/35 ZR19	-	For All : 250 (36) For Australia : 260 (38)
	T135/80 R18	420 (60)	



* Thanks for your cooperation for the more quality. Please surely rate this document before closing.